

GTNA

A Framework for the Graph-Theoretic Network Analysis



TECHNISCHE
UNIVERSITÄT
DARMSTADT

Benjamin Schiller Dirk Bradler Immanuel Schweizer
Max Mühlhäuser Thorsten Strufe



GTNA

Graph-Theoretic Network Analyzer

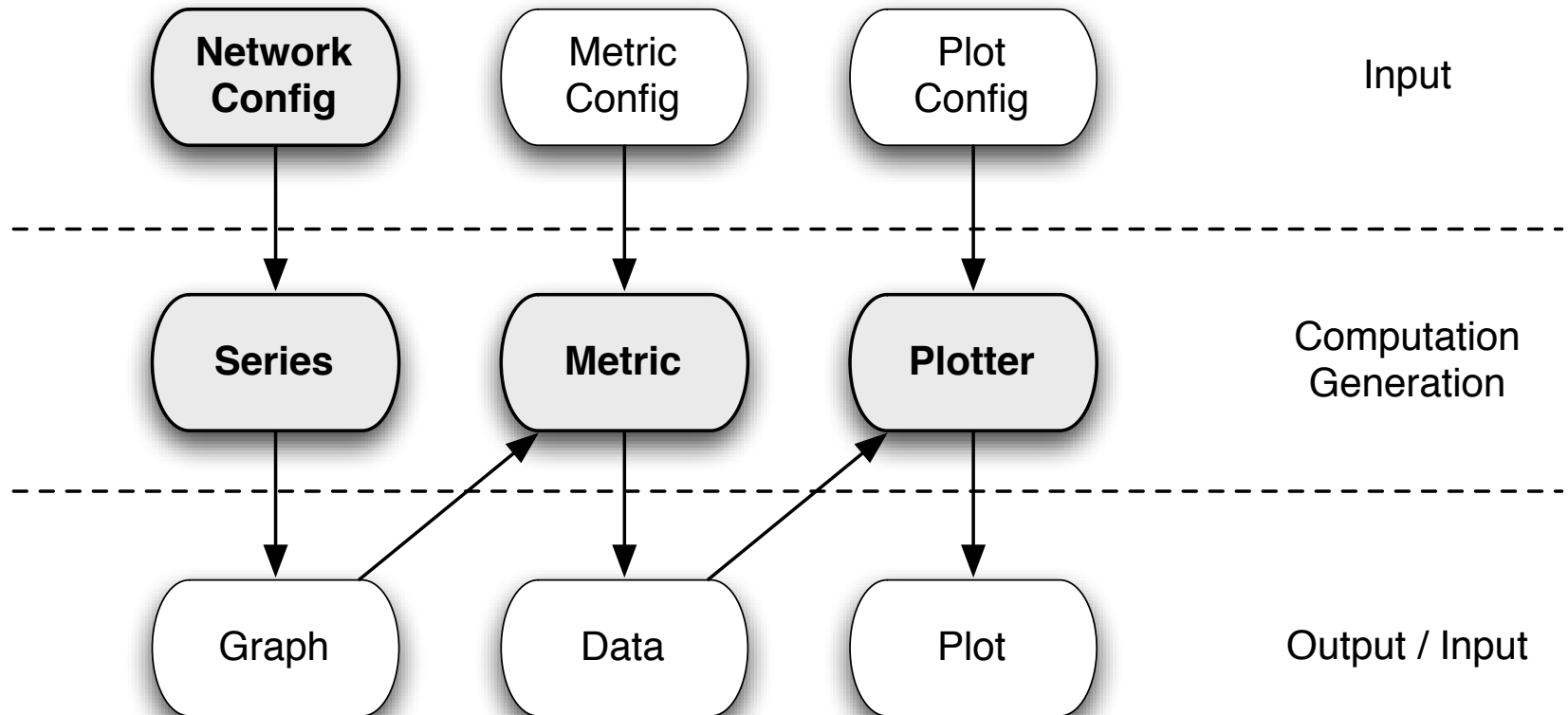
Outline

- Introduction
- Modules & Workflow
- Available Networks
- Available Metrics
- Runtime & Memory Usage

Introduction

- Simulation: research tool of choice for network analysis
- Mostly consider dynamic properties (no structural analysis)
 - Our approach: graph-theoretic analysis of network snapshots
- GTNA: extendable plugin interface
 - Topology generators
 - Metric implementations

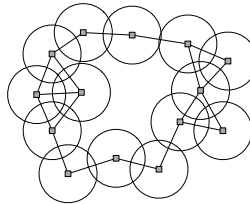
Modules & Workflow



Available Networks

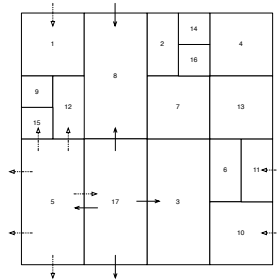
Network Models

- *Barabasi Albert, De Bruijn*
- *Erdos Renyi, Gilbert*
- *GNC, GNR, Kleinberg*
- *UnitDisc, Watts Strogatz*



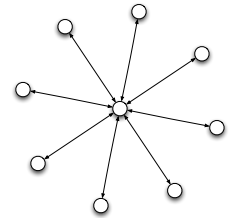
P2P Systems

- *CAN, Chord*
- *Gnutella 0.4 / 0.6*
- *Kademlia, ODRI, Pastry*
- *PathFinder, Symphony*



Canonical Networks

- *Complete, Ring, Star*



Import Mechanisms

- *Singe Files, Lists*
- *Many Formats*

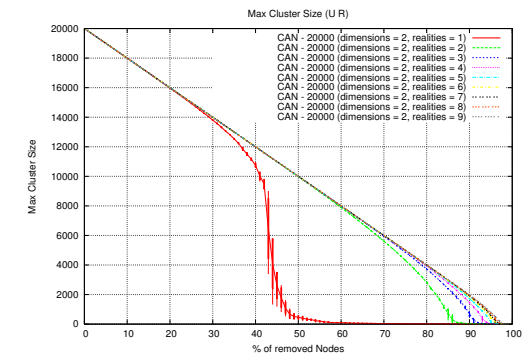
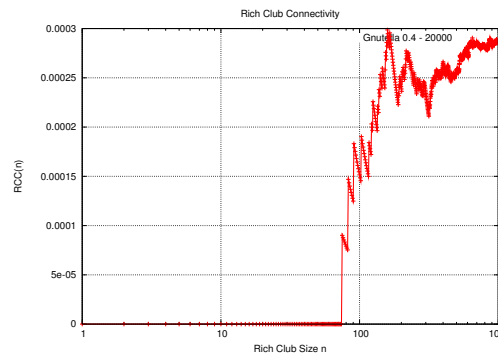
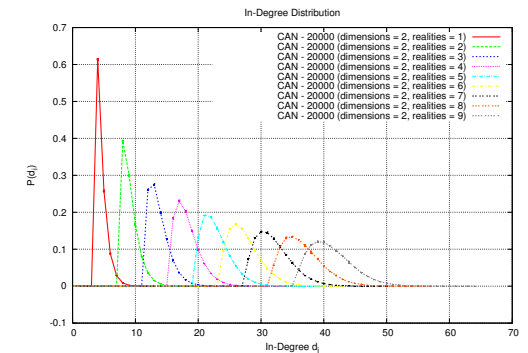
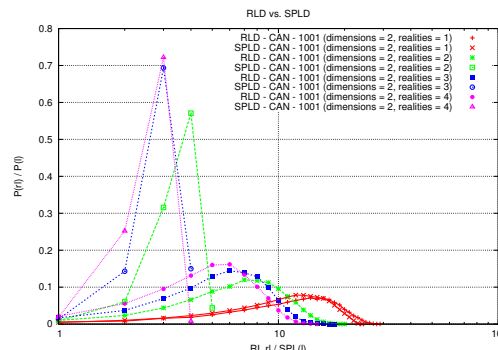
Transformations

- *Add Edges Per Node*
- *Add Edges Randomly*
- *Rewire*
- *Same Degree Distribution*

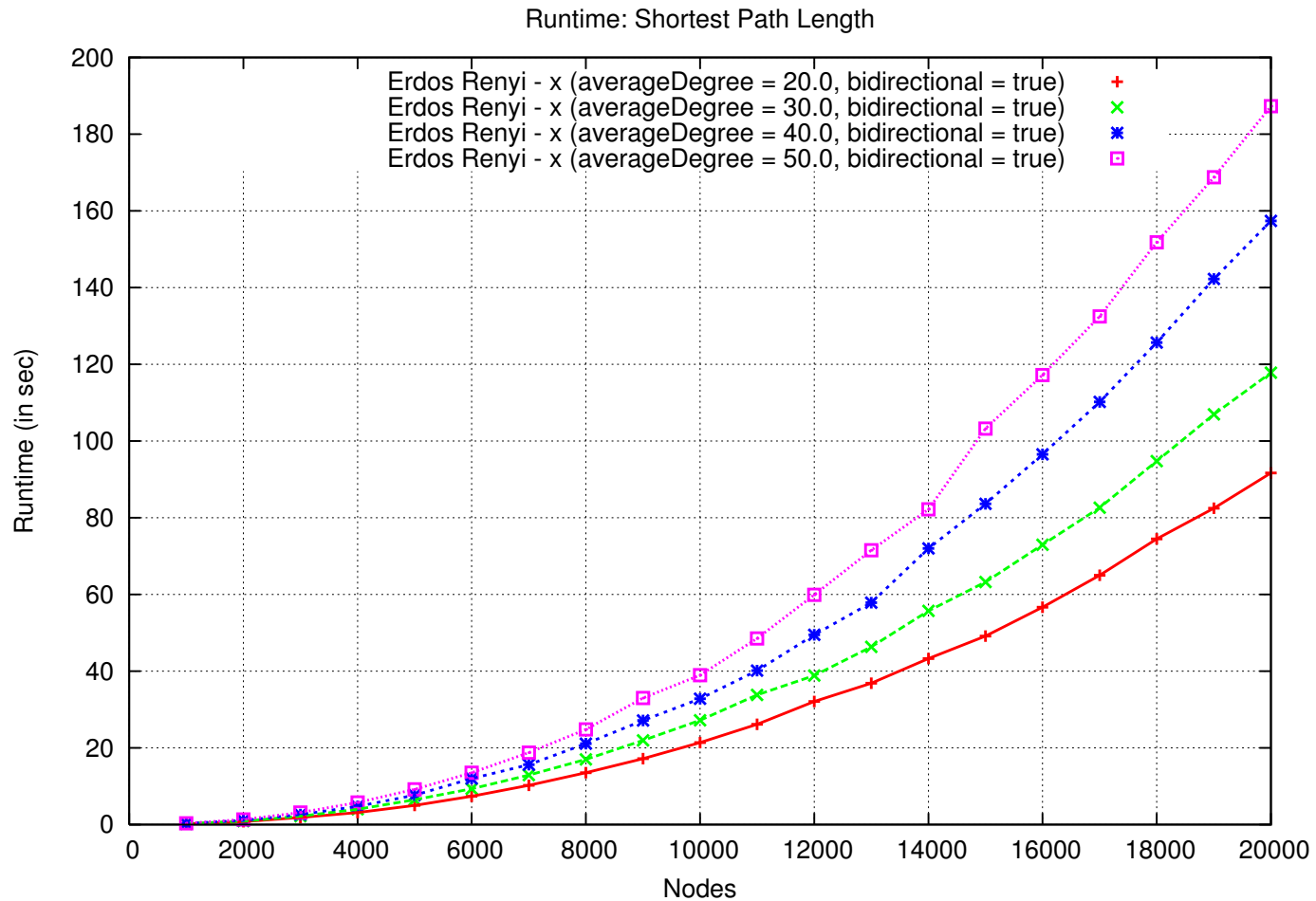


Available Metrics

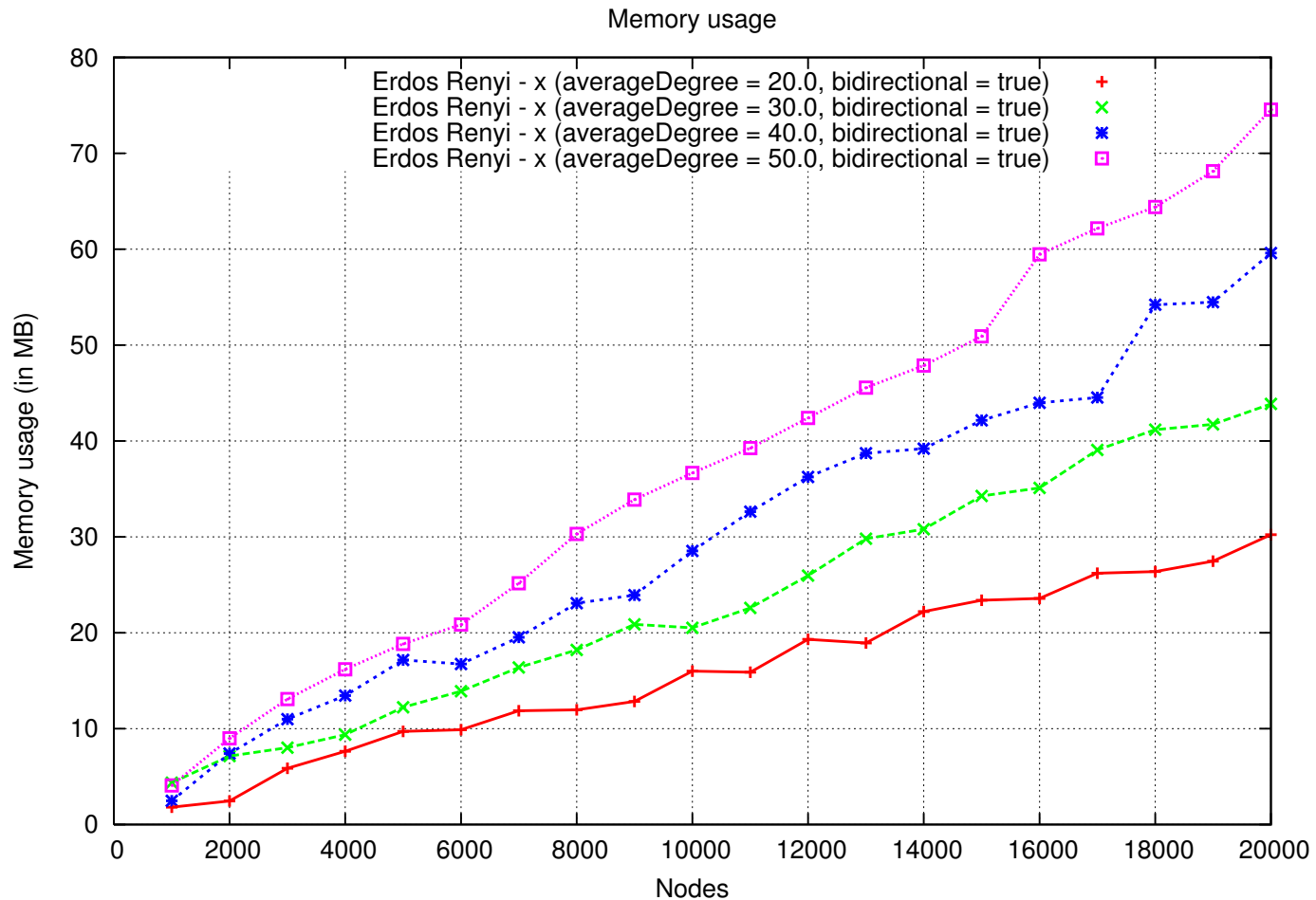
- Degree Distribution
- Shortest Path Length
- Routing Length
- Network Fragmentation
- Clustering Coefficient
- Rich Club Connectivity



Runtime



Memory Usage



GTNA

A Framework for the Graph-Theoretic Network Analysis



TECHNISCHE
UNIVERSITÄT
DARMSTADT

Benjamin Schiller Dirk Bradler Immanuel Schweizer
Max Mühlhäuser Thorsten Strufe



GTNA

Graph-Theoretic Network Analyzer

<http://tk.informatik.tu-darmstadt.de> → Research → Smart Civil Security → GTNA

schiller@cs.tu-darmstadt.de